

A COMPLETE PRODUCT RANGE OF SAFETY DEVICES
SOLUTION FOR ALL MOBILE EQUIPMENTS



SAFETY DEVICES



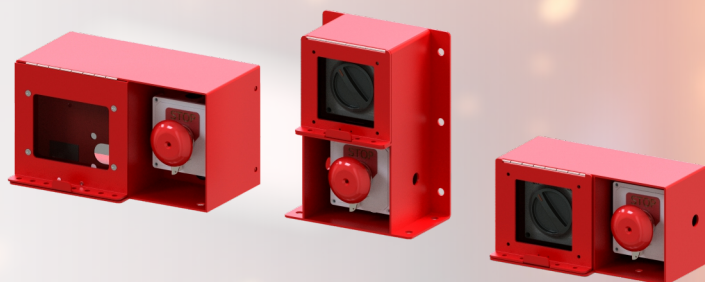
Fire Extinguisher

Hartex fire extinguisher is a handheld active fire protection device filled with a dry or wet chemical used to extinguish or control small fires, or in emergencies. It is not intended for use on an out-of-control fire, such as one which has reached the ceiling, endangers the user (i.e., no escape route, smoke, explosion hazard, etc.), or otherwise requires the equipment, personnel, resources or expertise of a fire brigade. Typically, Hartex fire extinguisher consists of a hand-held cylindrical pressure vessel containing an agent that can be discharged to extinguish a fire.

HARTEX Fire Extinguisher

| PN | Description |
|-----------|---|
| 866204000 | Dry Chemical Powder A, B, C Fire Class 3.0 Kg |
| 866207000 | Dry Chemical Powder A, B, C Fire Class 6.0 Kg |
| 866209000 | Dry Chemical Powder A, B, C Fire Class 9.0 Kg |



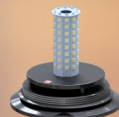
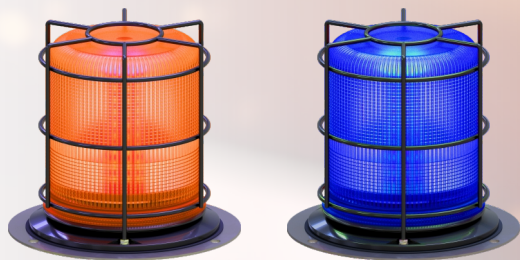


Emergency Stop With LOTO Box

Hartex Loto Box is a warning and safety sign system installed on the unit when performing Lock Out Tag Out (LOTO). LOTO is an energy isolation system which aims to control by turning off and cutting off the flow of energy from machines or equipment.

HARTEX LOTO Box

| PN | Description |
|-----------|----------------------------------|
| 870301000 | LOTO Box 2 System (Vertical) |
| 870301000 | LOTO Box 2 System (Horizontal) |
| 870301002 | LOTO Box 4 System (Horizontal) |



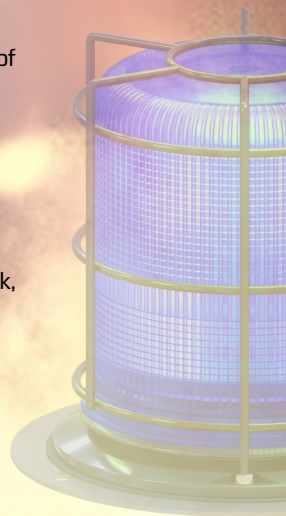
Strobe Light

Features:

- ◆ The material cover is PC
- ◆ Meets IP56 international protection standards
- ◆ Silicone drive rotator provides quiet
- ◆ DIN-mount base models enable speedy transfer or replacement of beacons
- ◆ Advantage : Tough and Durable
- ◆ 70 mph rated for magnetic version
- ◆ Coated die-cast aluminum base, 3-bolt fixing
- ◆ Working voltage : 12V or 24V
- ◆ Size : 142mm x 235mm (h)
- ◆ Color : Amber & Blue
- ◆ Usage : Utility trucks, construction vehicles, pilot cars, pickup truck, tractors and farm machinery

HARTEX Strobe Light

| PN | Description | PN | Description |
|------------|--------------------------|------------|-----------------------|
| WLX12-48VA | Strobe Light Xenon Amber | WLL12-48VB | Strobe Light LED Blue |
| WLX12-48VB | Strobe Light Xenon Blue | BSX12-48V | Bulb Spiral Xenon |
| WLL12-48VA | Strobe Light LED Amber | BPWL 12 | Bracket & Plate |



Ordering Information



Work Light

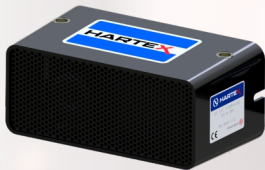
Features:

- ♦ High-power epistar LED
- ♦ Operating Voltage : 10-80V DC
- ♦ Reverse polarity protected
- ♦ Double insulated silicon rubberized wire, can bear very low & high temperatur
- ♦ Color temperature : 6500K
- ♦ Color : White/ Red/ Yellow/ Blue/ Green etc.
- ♦ Material : Aluminium die-cast housing, PC cover, Stainless steel bracket
- ♦ Working envirointment : -40° -80°
- ♦ Optional beam : Flood beam and Pencil beam

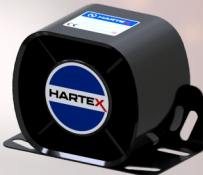
HARTEX Work Light

| PN | Description |
|---------------|------------------------------------|
| WL27W2500-LED | Work Light 27 Watt (9 LED) 2500 LM |
| WL48W3600-LED | Work Light 50 Watt (5 LED) 3600 LM |
| WL90W6500-LED | Work Light 90 Watt (9 LED) 6500 LM |





BA97-112



870361002

Back Up Alarm

Hartex Back Up Alarm is Designed to meet all the harsh operational requirements of any fleets equipment, Hartex Back Up Alarm feature a reverse-mounted speaker design and reinforced nylon housing providing unrivalled durability. These alarms are so robust that Hartex warranty covering the alarm for the life of the vehicle is offered on all models. Smart Alarm models measure ambient noise and adjust their sound level, creating a volume that is safe without being annoying or contributing to noise pollution. Smart Alarms eliminate the need for constant manual adjustment and help prevent intentional alarm disconnection.

HARTEX Back Up Alarm

| PN | Description |
|-----------|---|
| BA97-112 | Back Up Alarm Adjustment Low 97 Db. Med 107 Db. & High 112 Db. |
| 870361002 | Back Up Alarm 112 Db. |



REV. 14 MAR 2024

HARTEX GLOBAL INDUSTRIAL

Factory :

Green Sedayu Bizpark Cakung Blok GS 5 No. 102
Jl. Cakung Cilincing Timur Raya KM. 2
Cakung - Jakarta Timur - 13910

☎ : +62 21 461 3110 | 📞 : +62 811 803 6799
Email: info@hartex.id | Web: www.hartex.id

Distributor :

