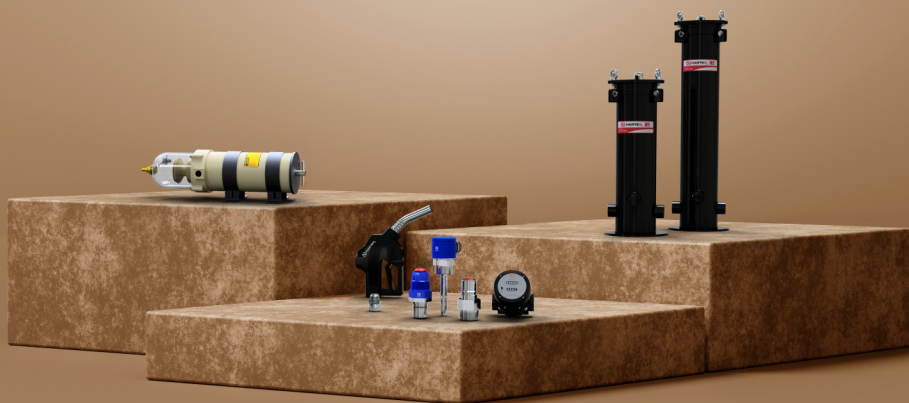




A COMPLETE FAMILY OF FLUID DELIVERY SYSTEMS  
SOLUTION FOR ALL INDUSTRIAL NEEDS



FLUID DELIVERY SYSTEMS

## Mining Heavy Equipment



## Fuel Receiver DFR-CVX

### DFR-CVX

A patented Check Valve Receiver allows fuel to flow in only one direction. Spray back from poppet Malfunction is eliminated. Fuel theft is minimised. The Check Valve Receiver is compatible with all major manufacturers' nozzles.

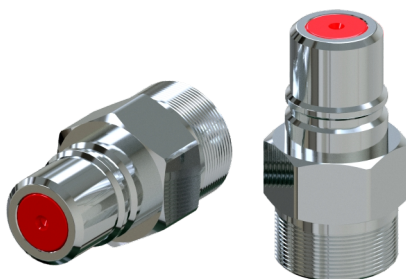


Part Number	Max Operating Pressure	Safety	Construction	Engineering	Thread Size
DFR-CVX	5,71 bar	Eliminates potential fuel spray	Nickel plated steel Anodized Aluminum	Prevents fuel theft	2" NPT
	75 psi				

## Fuel Receiver DFR-CV

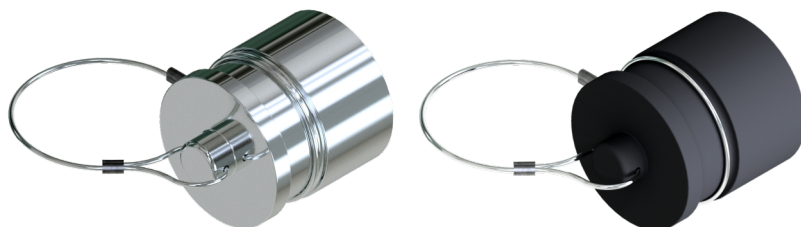
### DFR-CV

Our standard diesel fuel receiver is made from solid steel and is nickel-plated to ensure a long service life. Designed to accommodate flow rates up to 800 LPM (211 GPM), Hartex System fuel receivers are completely compatible with all major manufacturers' diesel fuel nozzles.



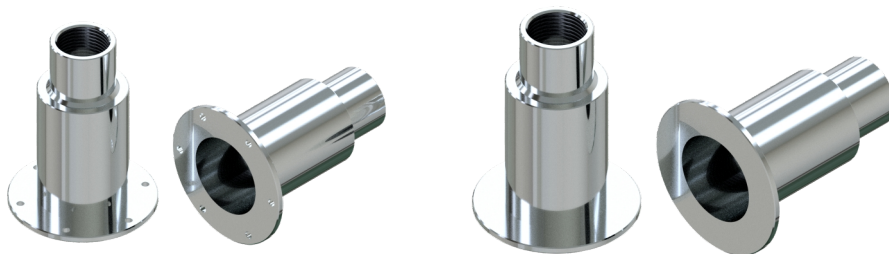
Part Number	Max Operating Pressure	Safety	Construction	Engineering	Thread Size
DFR-CV	5,71 bar	Eliminates potential fuel spray	Nickel plated steel Anodized Aluminum	Aluminum poppets instead of plastic	2" NPT
	75 psi				

## Fuel Receiver CAP



Part Number	Description	Materials	Safety	Thread Size
DFR-CAP	Fuel Receiver Cap	Plastic	Fuel Receiver Cover	-
DFR-C-HCP	Fuel Receiver Cap	Aluminum	Fuel Receiver Cover	-

## Bell Housing



Part Number	Description	Materials	Safety	Thread Size
BHB-32	Bell Housing Bolt	Stainless Steel	Fuel Receiver Protection	2" NPT
BHW-32	Bell Housing Weld On	Stainless Steel	Fuel Receiver Protection	2" NPT

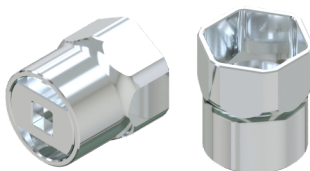


## Fuel Receiver Check Valve Socket Wrench



Part Number	Description	Materials	Safety	Thread Size
810104004	Fuel Receiver Check Valve Socket Wrench	Stainless Steel	Welded Handle	-

## Fuel Receiver Standard Socket Wrench



Part Number	Description	Materials	Safety	Thread Size
810104001	Fuel Receiver Standard Socket Wrench	Stainless Steel	Standard Handle Socket 3/4"	-

## Fuel Vents DFV-5

FUEL VENTS DFV-5

Standard diesel fuel vents are crucial to the performance of your fuel nozzle. A standard fuel system needs tank pressure to cause the nozzle to shut off. Our all metal construction fuel vents provide excellent durability and Versatility with more than 100 different configurations available. A 2" NPT port on top of tank is required.

HALF COUPLING

2" FNPT steel half coupling included. This vent is commonly used in retrofit applications where the required 2" NPT port did not exist. (Requires welding)



Part Number	Max Operating Pressure	Safety	Construction	Engineering	Thread Size
DFV-5	5.71 bar	Eliminates potential fuel spray	Nickel plated steel Anodized Aluminum	Prevents fuel theft	2" NPT
	75 psi				

## Fuel Filter Water Separator

The HARTEX Fuel Filter Water Separator Turbine Series is the most trusted line of fuel filter water separators on the market. The assembly's three-stage filtration system effectively removes water and particulates from fuel, providing maximum protection of diesel engine components in applications where reliability is critical.

Markets:

- Agriculture | Construction | Power Generation | Oil and Gas

Applications:

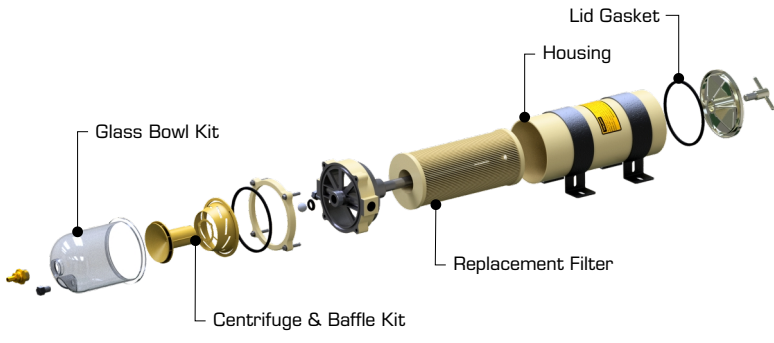
- Diesel and Biodiesel Engines

Benefits:

- Removes water that enters the system through condensation in the fuel tank.
- Removes hard particles present in air that are introduced during fueling, such as sand and silica.
- Removes soft contaminant particles from overheated and degraded diesel fuel.
- Prevents costly injector damage and increases operational life of downstream filters.

Features:

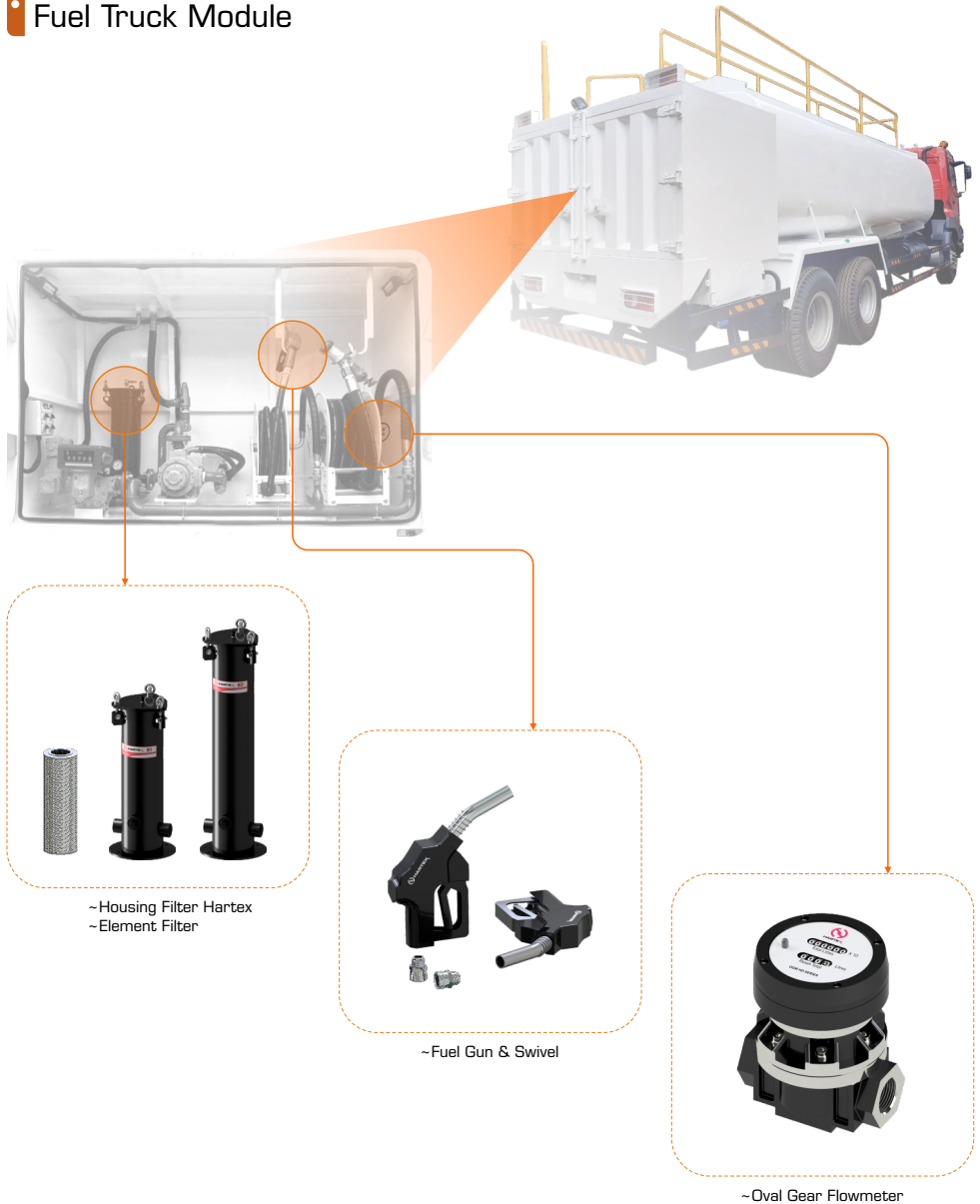
- Aquabloc® engineered media elements with 98% efficiency at 4, 10 or 30 micron
- Corrosion-resistant construction
- Self-venting drain valve or plug (on metal bowls)
- Clear contaminant collection bowl



Part Number	Description	Model	Max Flow	Flow Rate	Filter Element	Dimension (mm)
FH1000	Fuel Filter Water Separator	FH1000	120 GPM	180 GPH	2020 Series	151 x 554
2020TM-10	Replacement Filter	2020 Series	-	-	-	111 x 244

# Product Application

## Fuel Truck Module



## Oval Gear Flowmeter

OGM-oval gear meter has the ability to handle a wide range of fluid viscosities with exceptional level of repeatability and durability, applying in the petroleum, chemical, food industry, etc.



Part Number	Brand	Model	Body Material	Accuracy	Flow Range	Media	Inlet/Outlet
842040100	HARTEX	OGM-25	Aluminium	± 0.5%	20 - 200 LPM	Diesel / Gasoline / Kerosene	1" (25.4mm)
842040150	HARTEX	OGM-40	Aluminium	± 0.5%	25 - 250 LPM	Diesel / Gasoline / Kerosene	1.5" (38.1mm)
842040200	HARTEX	OGM-50	Aluminium	± 0.5%	30 - 300 LPM	Diesel / Gasoline / Kerosene	2" (50.8mm)

## Fuel Gun & Swivel

Hartex Fuel Gun is designed in accordance with ideal styles required by today's customers. It is small, light and easy to use. At the same time it is well manufactured, durable and reliable. It is applicable for filling ready-made diesel oil, kerosene and gasoline. Small aluminium gun body : It is light and easy to operate with unique and original appearance. Foam and static electricity are reduced due to pressure casting.

Swivel Fuel Gun is used to connect the gun nozzle and hose.

It is designed for easy use when refuelling.

Allows for easy nozzle positioning.

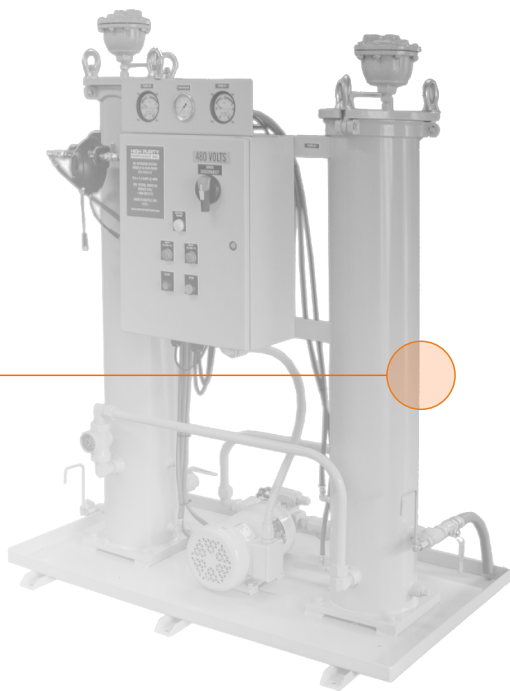
Reduces premature hose wear.

NPT Thread Male / Female ends.



Part Number	Brand	Model	Body Material	Accuracy	Flow Range	Media	Inlet/Outlet
TSN120-16	HARTEX	FG-25	Aluminium	± 0.5%	80 LPM	Diesel / Gasoline / Kerosene	1" (25.4mm)

## Kidney Loop Filtration System



~ Housing Filter Hartex  
~ Element Filter

## Housing Filter Hartex

### DESIGN FEATURES

- Made of carbon steel
- Epoxy coating inside and out
- Powder coated for weatherability
- Swing lid for easy access
- Gauge ports for improved monitoring



Part Number	Brand	Model	Material	Max Flow	MAX Working Pressure	Filter Element	Dimension	Inlet/Outlet
040168	Hartex	H1	Carbon Steel	120 GPM	150 PSI	1	11.63" X 31.56"	2" NPT
040188	Hartex	H2	Carbon Steel	150 GPM	150 PSI	2	11.63" X 49.69"	2" NPT

## Elements Filter

### DESIGN FEATURES

- Removes particulates like dirt, dust, & rust
- For use with gasoline, diesel, biodiesel up to B100, ULSD (Ultra Low Sulfur Diesel), ethanol blends up to 15%, and industrial fluids such as lubrication oils, hydraulic oils, synthetic oils, and many solvents
- For use with part # 40186, 40187, 40188, 40189, 40190, 40191



E-1300-02  
PART # 30066  
CELLULOSE



E-1300-10  
PART # 30008  
CELLULOSE



E-1300-30  
PART # 30009  
CELLULOSE



E-1300MG-03  
PART # 30204  
MICROGLASS



E-1300MG-05  
PART # 30203  
MICROGLASS



E-1300MG-10  
PART # 30202  
MICROGLASS



E-1300MG-03  
PART # 30204  
HYDROSORB



E-1300MG-05  
PART # 30203  
HYDROSORB



E-1300MG-10  
PART # 30202  
WIRE MESH







Distributor :

## HARTEX GLOBAL INDUSTRIAL

### Factory :

Green Sedayu Bizpark Cakung Blok GS 5 No. 102  
Jl. Cakung Cilincing Timur Raya KM. 2  
Cakung - Jakarta Timur - 13910

☎ : +62 21 461 3110 | 📞 : +62 811 803 6799  
Email: [info@hartex.id](mailto:info@hartex.id) | Web: [www.hartex.id](http://www.hartex.id)